

MAXUM

Next Generation
DC Commercial Door Operator
RJDC Jackshaft w/ Manual Release

DATA SHEET



Key Features

Standard Application

Recommended for door types including:
Sectional Doors (Standard Lift, High Lift and Full Vertical)
Rolling Steel Doors/Grilles
Standard Duty cycle only

Rated Duty Cycle

Standard Duty: Up to 20 cycles per hour

Operator Speed

Average 12" per second for Sectional doors and 8-9" per second on Rolling Steel doors

Limit Settings

Electronic limits via Floor Level Wall Controller with LCD display

Emergency Solution

Manual Release sash chain included to disconnect operator from door

Programming

Floor Level Wall Controller with LCD display to program and commission door

Circuit Board

DC Logic Circuit Board

Timer-to-Close

Programming through menu on wall controller. Option is available in B2 Mode with two settings. User can select a desired Timer-to-Close (TTC) time duration under that menu.

Mid-Stop

Program setup under System Configuration Operating Mode, Mid-stop

Battery Backup

DC7AH: (2) 7 Ah batteries and mounting bracket (optional)

Cycle Limiter Protection

Auto cool-down (max. 15 minutes) triggers if the hourly cycle limit is exceeded

Motor Reverse Action Protection

Stop Fast: 250ms ramp

Stop Ramp: 500ms-2000ms; Stop button while opening

Emergency (Safety-Chain): CTM trigger immediate stop

Motor Operator Wall Controller

Floor Level Wall Controller with LCD screen using 2 wire interface to connect to powerhead

LiftMaster

POWERED BY myQ

MAXUM

DATA SHEET

Next Generation
DC Commercial Door Operator
RJDC Jackshaft w/ Manual Release

Specifications

Radio Receiver	LiftMaster Security+ 2.0
Voltage Connections	120Vac 1 PH/240Vac 1/3PH; 480Vac 3PH; 208Vac 3PH (via transformer); 600Vac 3PH (via transformer)
Accessory Power	24Vdc, 1A Auxiliary Output
Drive Reduction	65:1 Gearbox with #50 Chain Output
Brake	Dynamic braking standard on all Maxum operators 2200 series operators include electromechanical holding brake
Construction	NEMA 1 type electrical box, heavy duty 11 gauge steel frame with durable powder coat finish. NEMA 4X type electrical box for NEMA 4X rated units
Warranty	5 Years Limited Warranty Battery Backup Kit - 1 Year LCD Wall Control - 2 Years Photoeyes - 1 Year Replacement Parts - 1 Year MAXUM Operator Standard Duty - 5 YEARS / 85,000 Cycles* Extended Duty - 5 YEARS / 130,000 Cycles*

Installation Features

Maximum Door Weight	See SKU listing below for maximum door weights allowable by SKU Connectivity
Wi-Fi®	Connect to Wi-Fi via Connectivity option on the wall controller
Internet Connectivity	myQ® technology enables remote monitoring and control via smartphone, tablet, computer. myQ Facility technology enables Diagnostics, absolute cycle count, service cycle count, and remote management

Door Weight Chart

SKU	Description	Max Door Weight
RJDC7S1BEL	JDC LH-REL 3IN SHAFT 700LB STD CYCLE 120/240V BBU CAPABLE	700 lb.
RJDC7S4BEL	JDC LH-REL 3IN SHAFT 700LB STD CYCLE 480V BBU CAPABLE	700 lb.
RJDC7S1BER	JDC RH-REL 3IN SHAFT 700LB STD CYCLE 120/240V BBU CAPABLE	700 lb.
RJDC7S4BER	JDC RH-REL 3IN SHAFT 700LB STD CYCLE 480V BBU CAPABLE	700 lb.

*Cycle count measurement will commence at the start of the warranty period; however, cycle counts will not be used to determine warranty eligibility until conclusion of the first two (2) years

LiftMaster

POWERED BY myQ

Next Generation
 DC Commercial Door Operator
 RJDC Jackshaft w/ Manual Release

Sectional Door Sprocket

Recommendations for 12-Tooth Operator Sprocket

Drum Diameter	Door Sprocket for Desired Speed					
	For 10-12 in/sec Door Speed			For 9-10 in/sec Door Speed		
	Sprocket Tooth Count	1 in. Bore 1/4 in. Keyway	1.25 in. Bore 1/4 in. Keyway	Sprocket Tooth Count	1 in. Bore 1/4 in. Keyway	1.25 in. Bore 1/4 in. Keyway
4"	16-Tooth	71-1550B16LGH	71-1550B16QGH	24-Tooth	71-1550B24LGH	71-1550B24QGH
5.25" - 5.75" & 8.5" (Vertical Lift)	24-Tooth	71-1550B24LGH	71-1550B24QGH	32-Tooth	71-1550B32LGH	71-1550B32QGH
6.375" - 11"	32-Tooth	71-1550B32LGH	71-1550B32QGH	42-Tooth	71-1550B42LGH	71-1550B42QGH
13.5"	42-Tooth	71-1550B42LGH	71-1550B42QGH	56-Tooth	71-1550B56LGH	71-1550B56QGH
Not Sure	24-Tooth	71-1550B24LGH	71-1550B24QGH	32-Tooth	71-1550B32LGH	71-1550B32QGH

Rolling Doors, Uninsulated

Recommended Door Sprockets

Max 20ft Door Height - 8-9 in/sec Door Speed						
Operator Series	Door Weight	Tooth Count	1 in. Bore 1/4 in. Keyway	1.25 in. Bore 1/4 in. Keyway	1 in. Bore 3/8 in. Keyway	1.25 in. Bore 3/8 in. Keyway
700	up to 450 lbs	50-Tooth	71-1550B50LGH	71-1550B50QGH	71-1550B50LKH	71-1550B50QKH
	450 to 700 lbs	72-Tooth	71-1550B72LGH	71-1550B72QGH	71-1550B72LKH	71-1550B72QKH

Rolling Doors, Insulated

Recommended Door Sprockets

Max 20ft Door Height - 8-9 in/sec Door Speed						
Operator Series	Door Weight	Tooth Count	1 in. Bore 1/4 in. Keyway	1.25 in. Bore 1/4 in. Keyway	1 in. Bore 3/8 in. Keyway	1.25 in. Bore 3/8 in. Keyway
700	up to 450 lbs	60-Tooth	71-1550B60LGH	71-1550B60QGH	71-1550B60LKH	71-1550B60QKH

MAXUM

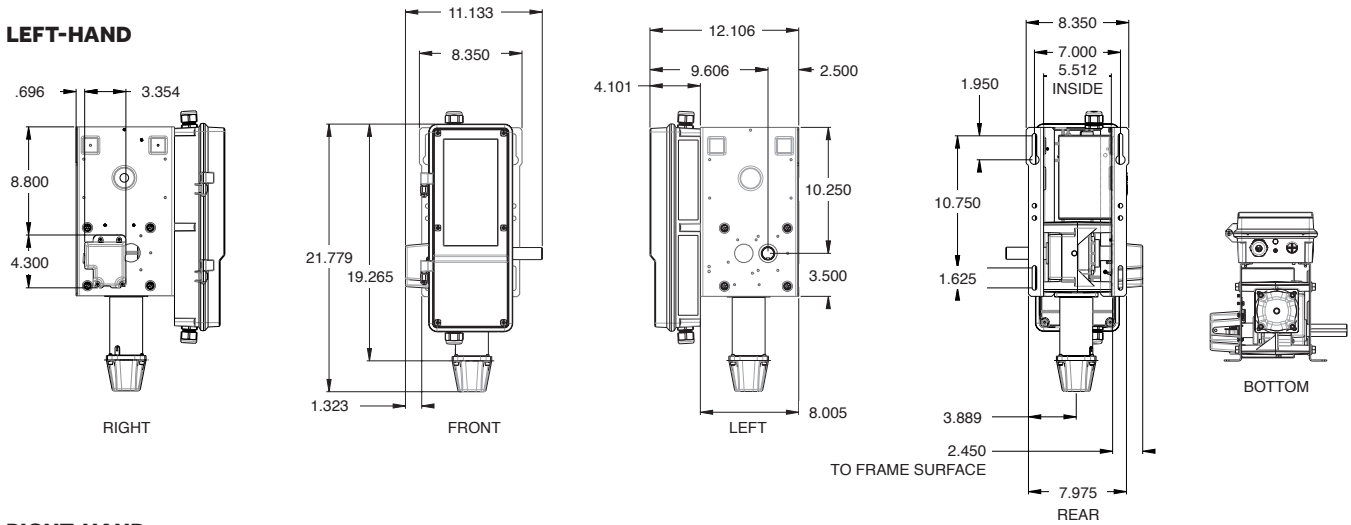
DATA SHEET

Next Generation
DC Commercial Door Operator
RJDC Jackshaft w/ Manual Release

Dimensions

	A	B
700 lb. Standard	19.2"	21.7"

LEFT-HAND



RIGHT-HAND

